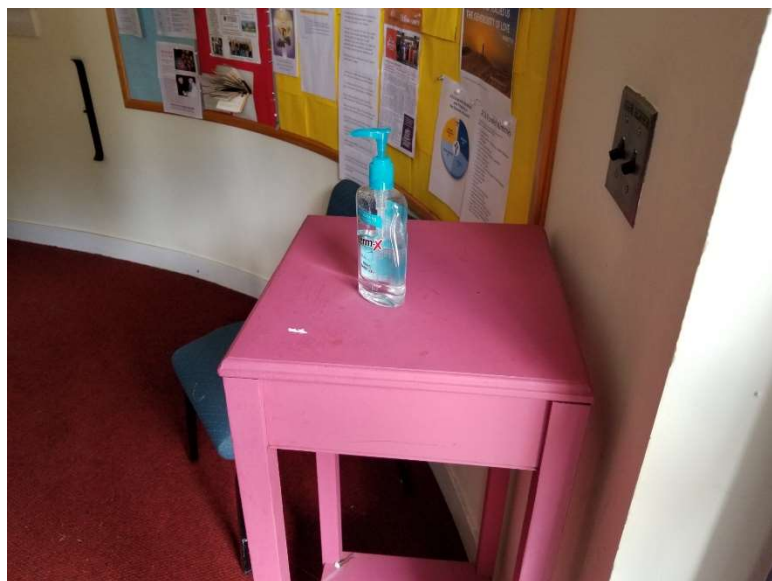


Reopening Masses at St. Maurice - July 4, 2020 and until further notice



To attend Mass during the COVID-19 pandemic, you are required to wear a mask that covers your mouth and nose during the service except when receiving Communion. If you are unable to wear a mask, it probably means you have other health issues and should not attend. The dispensation from the Bishop is still effective. Please put on your mask as soon as you get out of your car. The doors to both the North and South vestibules will be open. If the doors are closed, it means that the seating capacity for safe social distancing has been exceeded and you should try attending the next Mass. Ushers will be doing their best to seat everyone arriving.

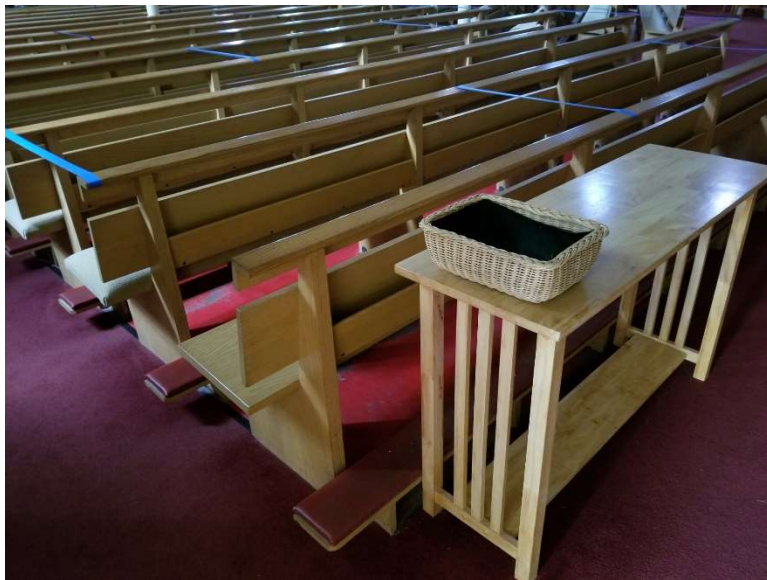


Hand sanitizer is available on the table immediately inside the door. Please use it before entering the Church.



The inner doors will also be open to reduce the number of touch points. Please touch as little as possible along your route to make it easier to sanitize after Mass, but do not worry about it if, for example, you need to steady yourself.

Due to the difficulty of sanitizing the route, the basement restrooms will not be available. If needed, the accessible restroom in the Parish Center will be open for use. Go in the door to the North vestibule of the Parish Center.



As you enter the Church, an usher will greet you and direct you to an open seating section. Note that only the ends of every third row are open. Ribbons have been placed to indicate which pews may not be occupied. The center of available pews is also roped off with ribbons to help you maintain safe social distancing. Members of a family may sit together. Open sections will sit three comfortably. If you need more room, ask the usher to adjust the ribbons to fit your family.

Please leave your offertory in the basket on the ushers' table as you enter. There will be no basket passing.



The first pew of the center section is open, but we ask your family to enter and leave the pew on the North side only. This is to maintain social distancing with the South seating and promote better traffic flow during Communion.

Directional arrows and other markers apply to receiving Communion only.

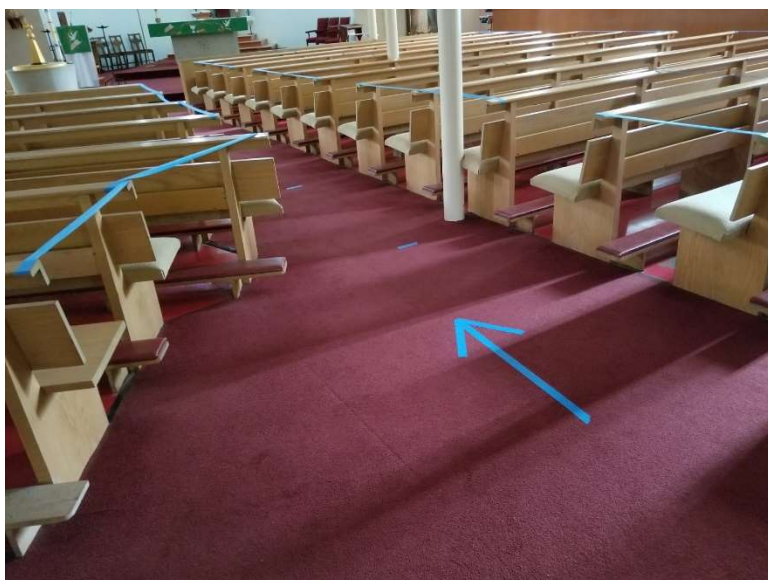


Ribbons have been placed to indicate which pews may not be occupied. The center of available pews is also roped off with ribbons to help you maintain safe social distancing.



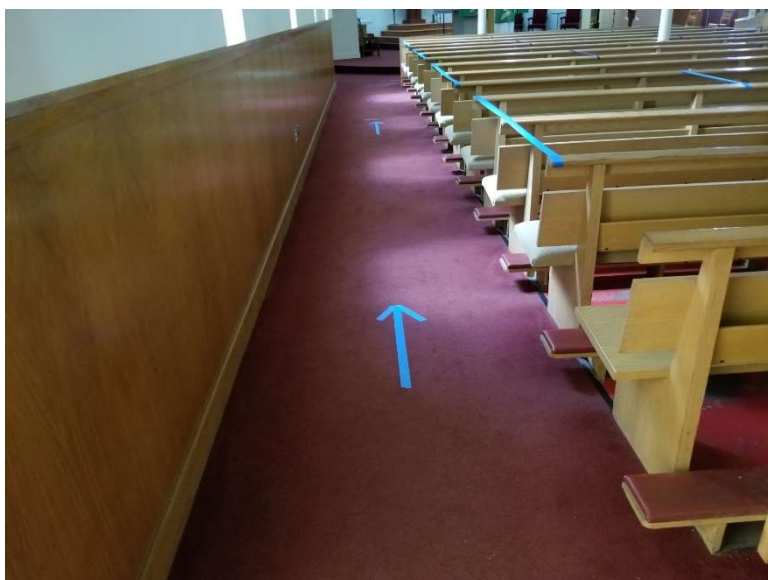
Communion will be distributed after the dismissal. If there is music (there will be no singing), organist Don Benevides will receive first, then the ushers.

An usher will direct those sitting on either side of the North center aisle to proceed to the Communion station at the back of the Church. Arrows and markers have been placed to indicate direction and safe social distance while waiting.



If you wish to receive Communion on the tongue, please sit in one of the side aisles when you enter and remain seated after Mass until the line for Communion begins to clear. The Extraordinary Minister must sanitize the hands after each time distributing on the tongue, so your cooperation will be greatly appreciated.

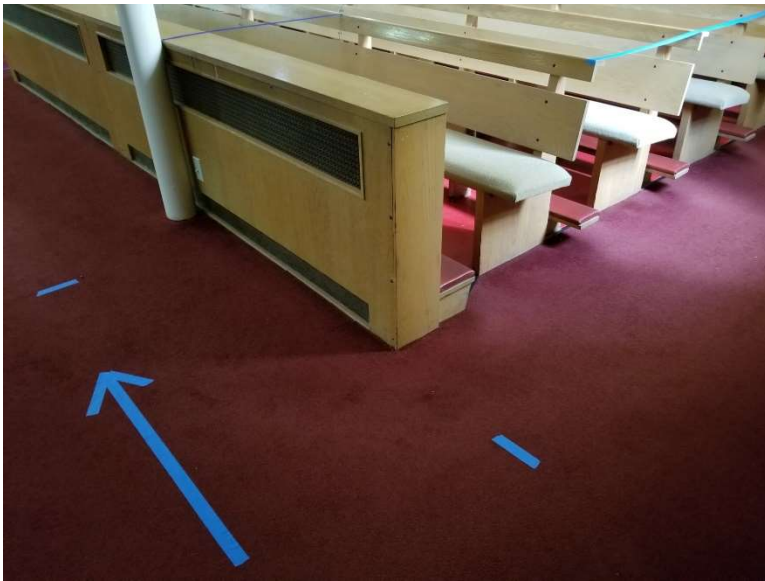
An usher will direct those sitting on either side of the South center aisle to proceed toward the front of the Church. Upon reaching the front, make a V-turn and proceed down the North center aisle to the Communion station.



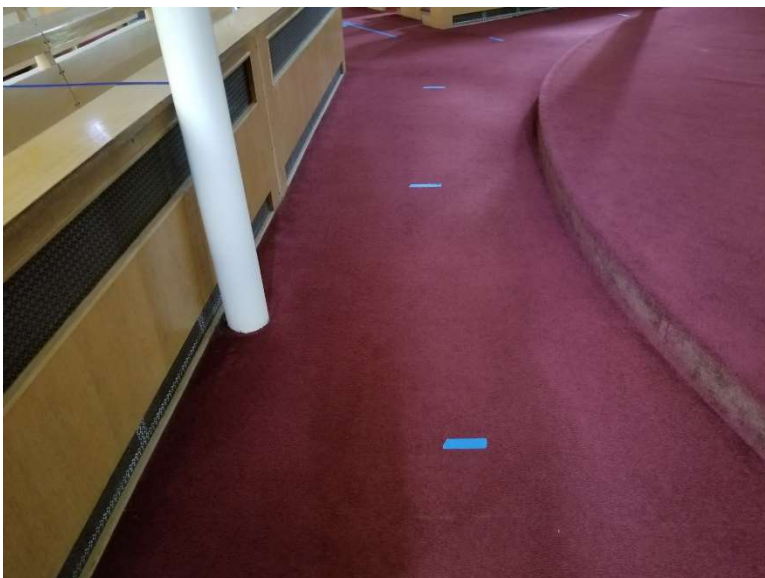
An usher will direct those sitting on the North side aisle to proceed to the front of the Church. Arrows and markers have been placed to indicate direction and safe social distance while waiting.



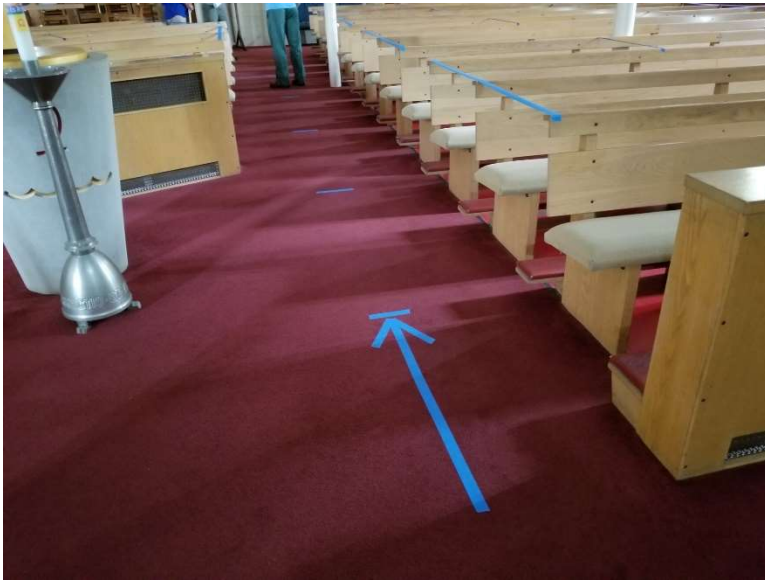
An usher will direct those sitting on the South side aisle to proceed to the front of the Church. Arrows and markers have been placed to indicate direction and safe social distance while waiting.



Upon reaching the front cross aisle, those coming up the side aisles will turn toward the center of the Church. Arrows and markers have been placed to indicate direction and safe social distance while waiting.



Upon reaching the front cross aisle, those coming up the side aisles will turn toward the center of the Church. Arrows and markers have been placed to indicate direction and safe social distance while waiting.



Those who had been seated along the side aisles will alternate taking the next place in the North center aisle and proceed down it to the Communion station.



Please wait at the long social distance marker while the person before you Communicates. When they have turned aside to leave, proceed to the Communion station and remove your mask.



For his protection, Father Bill will not be distributing Communion. An Extraordinary Minister of Holy Communion will be standing behind the plexiglass screen. Receive Communion in the hand under the screen in the usual way and turn aside to leave when you are ready. Proceed directly out of the Church by either door, which will be open.

If you wish to receive Communion on the tongue, please kneel and then Communicate below the plexiglass screen. When you are ready, rise and proceed directly out of the Church by either door.

You may choose to return to your original seat to pray after Communion.

God bless you.